




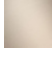


CL.1 Bath spout for wall mounting - Brushed Platinum

CL.1

13 801 705



- 205mm projection
- rectangular spray pattern with 55 individual jets
- hole diameter 37 mm
- 1/2" connection
- plug-link mounting
- max. flow 24.6 l/min at 3 bar flow pressure

	Brushed Platinum	13 801 705-06
	Chrome	13 801 705-00
	Dark Chrome	13 801 705-19
	Brushed Champagne (22kt Gold)	13 801 705-46
	Champagne (22kt Gold)	13 801 705-47
	Brushed Dark Platinum	13 801 705-99

Required miscellaneous

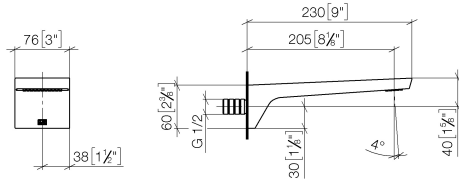
Concealed adapter -

35 080 970-90
0010



13 801 705

mm [inches]



Flow rate chart



Codes & Standards

ASME
A112.18.1/CSA
B125.1



CL.1 Bath spout for wall mounting - Brushed Platinum

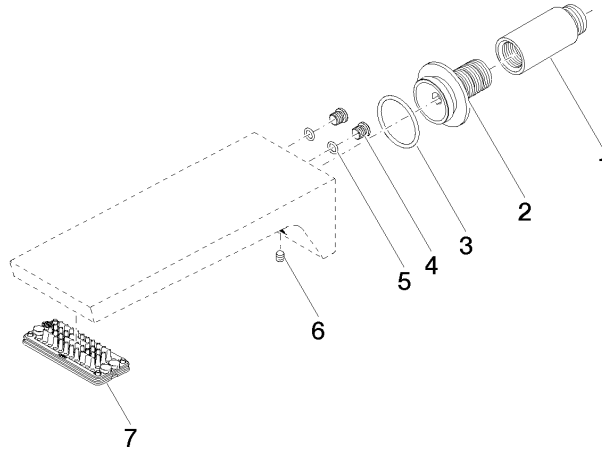
CL.1

13 801 705

Certificates

WRAS_1512012. LGA_28683. IAPMO_4976 (6).

13 801 705



Spare parts list

No.	Item Number	Name	Quantity used	Delivery time
1	09 24 03 081 10 90	extension	1	2
2	09 24 03 180 90	nipple	1	2
3	09 14 10 119 90	seal	1	2
4	09 31 20 027 10-00	plug	2	10
5	09 14 10 132 90	seal	2	2
6	90 31 11 004 00 90	pin	1	2
7	90 11 02 299 00 90	aerator	1	2